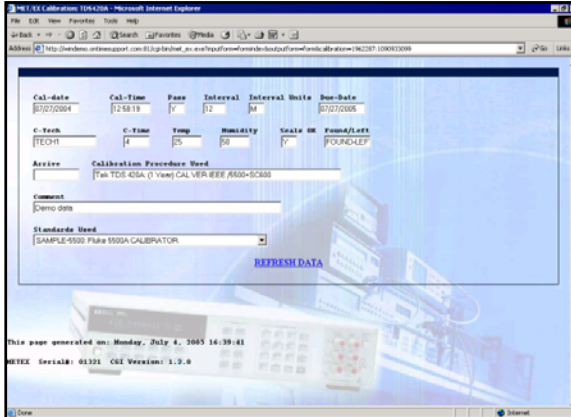


Metrology Xplorer 1.2



In 1999, On Time Support released Metrology Xplorer® 1.0 for MET/CAL and MET/TRACK. During that time, the web was seen as a new technology for the calibration laboratory to use. Browser standards were still being developed. Metrology Xplorer gained a reputation as a "reliable, high speed" data access tool for end users and customers.

On Time Support's newest version Metrology Xplorer® 1.2, allows your customers to view MET/TRACK data on your company's internal network (Intranet) or if you needed to can allow your external customers access from the Internet. Metrology Xplorer can provide significant timesavings for the busy lab manager. By allowing customers within your company the ability to access your MET/TRACK data, the lab manager and lab personnel can be freed from the tedious process of providing recall reports, instrumentation information, and statistical data. You can configure which data fields are available and can even determine a time frame for the data to be viewed. Just imagine how much time and effort could be saved if your customers could run their own reports and print their own recall lists and certificates.

Access to your MET/BASE database is provided using Metrology Xplorer and a common web browser (such as Firefox or Internet Explorer).

New Features for Metrology Xplorer 1.2

- The "Treeview Display" has been updated to include Inventory, Customers and the New Full Calibration Results. It is easy to configure the "Treeview" by making the links descriptive, you will save time looking for information.
- There is an enhanced results header for the Full Results calibration data. So it's easy to adjust the form to match your results data format.
- Standards can now be displayed in the calibration screen for each calibration record.
- New style sheets and "Themes" have been added to present a pleasing and interesting display. Six different themes are available. Custom backgrounds are also available, and if you contact us we may be able to create it for you.
- A major improvement is the use of Crystal Reports 10. It is now much easier to configure a Crystal Report for Metrology Xplorer 1.2.
- You can now select from a list of calibration histories after you have selected an asset. Several customers have asked for this feature. This means you or our customer can print separate AS-FOUND and AS-LEFT certificates.
- The installation and configuration procedure is easier and when setting up ODBC on the server for Metrology Xplorer to use.
- And, as your database grows, Metrology Xplorer grows with it. When you add fields or change definitions, Metrology Xplorer automatically adjusts to these changes.

There are several immediate benefits to using Metrology Xplorer on your company's network:

- Almost all computers have a web browser pre-installed; you do not need to install anything on your customer's computer to allow access to MET/TRACK.
- Most people are already familiar with browser usage, so there is no need for extensive training on MET/TRACK operation. The screens are simple, intuitive, and require very little, if any training to use.
- Internal (and external) customers may view instrument data and run reports at their convenience, instead of having to disrupt your workflow to provide this information.

Reports

CALIBRATION RECALL ON OVERDUE INSTRUMENTS								
Asset Number	Manufacturer	Model	Description	Serial Number	Cal date	Due Date	User Name	Check-out Date
SAMPLE 42-1	Fluke	742-1	1 OHM RESISTANCE STD	742010001	08-16-1999	03-29-1999	D. DEAVER	06-23-1999
SAMPLE 8842	Fluke	8842	DMM	884200997	08-14-1998	08-13-1999	D. RAWLESS	06-23-1999
SAMPLE 11	Fluke	11	DIGITAL MULTIMETER	110011001	06-04-1999	06-02-2000	J. BENSON	06-23-1999
SAMPLE 10	Fluke	10	DIGITAL MULTIMETER	10101010	07-25-1999	07-24-2000	R. ISAAC	06-23-1999
SAMPLE 87	Fluke	87	DIGITAL MULTIMETER	87001001	08-11-1999	08-10-2000	B. EICHNER	06-23-1999
SAMPLE 73	Fluke	73	DC REFERENCE STD	73000001	07-02-2002	07-21-2004	D. DEAVER	06-23-1999
TS820	Tektronix	TS820	OSCILLOSCOPE	B021274	05-27-2004	08-27-2004	D. Lynde	04-05-2005
MS129	Fluke	97	OSCILLOSCOPE MULTIMETER	10454723	04-08-2004	10-08-2004	M. Nicholas	04-05-2005
TS210	Tektronix	TS210	OSCILLOSCOPE	B013767	04-14-2004	10-14-2004	R. Lynde	04-05-2005
TS420	Tektronix	TS420A	OSCILLOSCOPE	B010251	05-27-2004	11-26-2004	D. Filipp	04-05-2005
SAMPLE 5725	Fluke	5725A	BOOST AMPLIFIER	572500001	07-02-2002	12-17-2004	D. DEAVER	06-23-1999
SAMPLE 5500A	Fluke	5500A	CALIBRATOR	4820000	07-02-2002	12-17-2004	A. CASE	06-23-1999
134205	Fluke	PK6680	COUNTER TIMER	6013973	06-23-2004	12-23-2004	D. Svett	04-05-2005
TS840B	Tektronix	TS840B	OSCILLOSCOPE	B010656	06-24-2004	12-24-2004	D. Svett	04-05-2005
HP4701A	HP	44701A	VOLTMETER PLUG-IN	2919A11120	03-28-2004	03-28-2005	J. DeGroot	04-05-2005
MS2018	Fluke	87	MULTIMETER	5378015	04-23-2004	04-22-2005	D. Heenan	04-05-2005
MS270	Fluke	87III	MULTIMETER	84800330	04-23-2004	04-28-2005	D. Filipp	04-05-2005

Total number of records for this report: 17

In addition to displaying customary MET/TRACK screens, Metrology Xplorer provides two reporting mechanisms:

- **Crystal Reports™** (such as calibration certificates and traceability reports.)
- **SQL Quick Reports** (for list-style reports such as equipment due for calibration and equipment owned by a customer, etc.)

Download Free Demo

You can download a free demo from the download section on our website. You can also request a Metrology Xplorer CD demo, but you must have MET/TRACK 7.1 or higher, have TCP/IP networking, and have installed the proper web server. If you decide you want to test Metrology Xplorer, contact us by E-Mail or Phone and we will supply you with a 30 day demo code which is fully functional.

ORDERING INFORMATION:

Part Numbers:

Metrology Xplorer 1.2

5022 US Customers

5022-EUR Non US Customers

Metrology Xplorer 1.2 Upgrade from Previous Ver.

5023 US Customers

5023-EUR Non US Customers

You can order Metrology Xplorer from On Time Support or the Fluke Corporation. Please contact either company for a quote.

On Time Support, Inc.

25132 Oakhurst Drive, Ste. 185

Spring, TX 77386

281.296.6066

Fax: 281.465.9478

inquiries@ontimesupport.com

www.ontimesupport.com

©2005 On Time Support, Inc. All Rights Reserved. Remote Pipeline, Process/Track and Barcode Magician are registered trademarks of On Time Support. All other trademarks are owned by their respective companies.