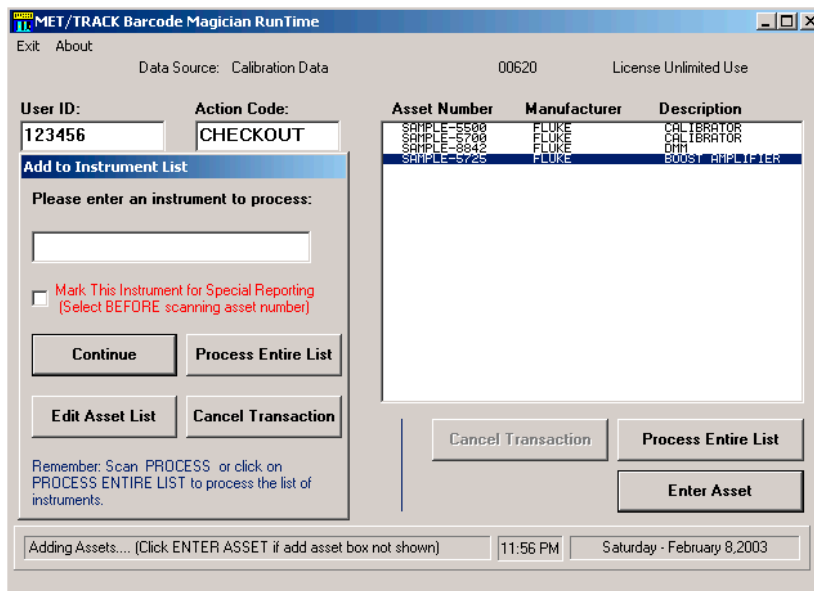


Barcode Magician® 1.5



Barcode Magician run time program processing assets

Data entry reliability, more features, faster than ever before

Barcode Magician 1.5 (BCM) allows you to automate repetitive database entry tasks simply and consistently for quantities of assets using a barcode tool or keyboard.

BCM provides an easy-to-use interface for calibration technicians and instrument custodians to update your Fluke MET/CAL® database (version 6.x and 7.x) quickly and efficiently, while drastically reducing data entry errors and substantially increasing productivity. And, by using a barcode scanner in conjunction with this software, you can automate such tasks as:

- Checking in/out equipment from a tool crib or instrument impound area

- Updating in-process status descriptors
- Changing location and association of assets
- Accepting instrumentation for repair work

Barcode Magician works by making changes to instruments within the MET/CAL database. For example, to automate checking in/out equipment to a customer, you simply instruct BCM how to represent a checked-in/out instrument in the database, and then you can use this instruction against a list of instruments.

This single check-in/out instruction can be represented with a barcode label, affixed to the computer. The operator would simply scan (or type) this label into BCM, along with a list of instruments to update each record. These instructions, referred to as an *Action Code* within

BCM, are easy to define and configure with the new Action Code Editor.

NEW Barcode Magician features for version 1.5:

- SQL statements for use in criteria checking, warnings, and “Custom Mods,” including stored procedure calls adding flexibility and throughput
- Unlimited user database entries & custom modifications
- Combined check in/out with one action code
- Improved Crystal Reports—up-to-four reports per action code
- Enhanced system throughput
- Flexibility to use fixed workstation licenses or floating concurrent licenses
- Validation available when using a dialog box to update a validated MET/CAL field, (version 6.x and higher)
- Custom phrase file allows edit of labels and captions
- Phrases can be translated into other languages
- Required dialog box entries
- Action Code pick list
- Action Code search function in the Action Code Editor
- Added customers table access and updates
- Command line run time start option for more than one database
- Hidden user identification option
- Forced upper case data entry option
- Ability to modify the messages and captions in the screens

- Users can be purged automatically after a period of inactivity

Real-time updates

Every transaction updates the MET/CAL database in real-time. This enhances the integrity of your lab management system by defining orderly processes that must be completed before an instrument has a particular function performed on it (i.e. preventing overdue instrumentation from being loaned).

Reports

At the end of each transaction, the operator has the option to print up-to-four reports, including:

- packing lists
- calibration certificates
- instrument followers
- routing slips
- transaction confirmations
- a list of checked in/out equipment, or
- custom designed reports

These reports, specially designed for BCM may take only a few seconds to execute while the same report running under MET/CAL

may take several minutes. And with version 1.5 you can even assign reports to a specific Action Code.

BCM easy to use and enhanced system integrity

With BCM, a terminal can be placed at a common point for instrument transaction, such as a tool counter or lab window. When combined with a barcode reader, you can allow customers to check in equipment for calibration and check it out when it is finished. (ON TIME SUPPORT has barcode readers available to support your requirements.)

You can also set up a terminal (kiosk) for location updates, such as equipment transfers between projects or technicians.

Location updates can even be performed by personnel while still updating the database in a consistent manner, enhancing the integrity of your system without making it cumbersome.

BCM helps lab managers meet the new rules relating to ISO9000 and the need to keep track of where and which instruments were used in case of an instrument failure.

Free demo

If you have a MET/CAL Database (6.X or a higher version), Barcode Magician demos are available upon request. Contact us by e-mail or phone and we will supply you with a 30-day demo code and fully-functional software. You can download the files from our download section or we can send you a CD. You can also download and view the system manual in PDF formats.

Upgrading existing Barcode Magician systems

Upgrades are available for 1.3 and 1.4 versions of BCM. When ordering you must include a copy of your license registration report. License registration reports can be downloaded from our Web site: www.ontimesupport.com

Please call us if you have questions.

ORDERING INFORMATION

PRODUCT	PART NUMBER
Barcode Magician 1.5:	5032
Barcode Magician upgrade	5033
PRODUCT PACKAGES (NORTH AMERICA ONLY)	
Barcode Magician software, wedge scanner, label printer:	8007-1
Barcode Magician software (Win 98 and Win 2000), USB scanner, label printer:	8007-2
Barcode Magician software, wireless scanner, label printer:	8007-3

For Pricing & Delivery Contact:
On Time Support Inc. or your Fluke representative.

ON TIME SUPPORT, INC.

25132 Oakhurst Drive, Suite 185
 Spring, TX 77386
 281.296.6066
 Fax 281.465.9478
inquiries@ontimesupport.com
www.ontimesupport.com

© 2003 On Time Support, Inc. All Rights Reserved. Remote Pipeline, Process/Track, and Barcode Magician are registered trademarks of On Time Support. All other trademarks are owned by their respective companies.