

## **Metrology Xplorer@ 1 Report Updater**

This package includes an optional Report Format tool for Metrology Xplorer 1.2 (METEX1). METEX1 has the ability to display Crystal Reports, but the report format is converted HTML which is not paginated. This package adds PDF and other report formats for your Crystal Reports. When a PDF file is created it is paginated properly and ready for printing or saving as a file at the client computer.

## **Installation Procedure and Registration**

This installation will describe the procedure to update the zip files. Please follow this procedure carefully.

First, open the zip file archive.

Name ▲	Size	Type	Modified
MET_EX.exe	364 KB	Application	6/7/2009 3:21 PM
mx_calibration.css	1 KB	Cascading Style Sh...	3/23/2006 8:16 PM
mx_customer.css	1 KB	Cascading Style Sh...	3/23/2006 8:17 PM
mx_inventory.css	1 KB	Cascading Style Sh...	3/23/2006 8:17 PM
mx_location.css	1 KB	Cascading Style Sh...	3/23/2006 8:18 PM
mx_repair.css	1 KB	Cascading Style Sh...	3/23/2006 8:18 PM
mx_search.css	1 KB	Cascading Style Sh...	3/23/2006 8:20 PM
OTS_Licenses_Cr...	11 KB	Crystal Reports	6/7/2009 3:23 PM
ProductInstall.011	1 KB	011 File	5/9/2005 4:30 PM
readme.txt	2 KB	Text Document	8/24/2007 7:53 AM
reginst.exe	68 KB	Application	5/18/2005 1:00 PM
v7_make.011	3 KB	011 File	2/1/2007 5:33 PM
vAll_make.011	46 KB	011 File	2/3/2007 4:10 PM
webadmin.exe	528 KB	Application	6/5/2009 6:43 PM

Copy the files that are highlighted, in the diagram above, onto the server where the cgi-bin directory is located. You can search the server for the MET\_EX.EXE file and it should be in the cgi-bin directory. Before copying the files, you may want to back up the existing files in the cgi-bin directory first. Copy the files and overwrite the existing files on the server.

# METROLOGY XPLOER@ 1 - Report Updater

Build 1.2.9

ON TIME SUPPORT, INC.

Next, copy the files that are highlighted to the client computer where the admin program is installed. You may want to back up the existing files first.

Name	Size	Type	Modified
MET_EX.exe	364 KB	Application	6/7/2009 3:21 PM
mx_calibration.css	1 KB	Cascading Style Sh...	3/23/2006 8:16 PM
mx_customer.css	1 KB	Cascading Style Sh...	3/23/2006 8:17 PM
mx_inventory.css	1 KB	Cascading Style Sh...	3/23/2006 8:17 PM
mx_location.css	1 KB	Cascading Style Sh...	3/23/2006 8:18 PM
mx_repair.css	1 KB	Cascading Style Sh...	3/23/2006 8:18 PM
mx_search.css	1 KB	Cascading Style Sh...	3/23/2006 8:20 PM
OTS_Licenses_Cr...	11 KB	Crystal Reports	6/7/2009 3:23 PM
ProductInstall.011	1 KB	011 File	5/9/2005 4:30 PM
readme.txt	2 KB	Text Document	8/24/2007 7:53 AM
regist.exe	68 KB	Application	5/18/2005 1:00 PM
v7_make.011	3 KB	011 File	2/1/2007 5:33 PM
vAll_make.011	46 KB	011 File	2/3/2007 4:10 PM
webadmin.exe	528 KB	Application	6/5/2009 6:43 PM



You will need to re-register the product with your existing METEX1 license. If you do not have your METEX1 license, you can look it up from the database. The archive contains the Crystal Report, OTS\_Licenses\_Crys\_10.rpt, which can be used to look up the license. This report must be copied to the directory where the MET/TRACK report reside. You can run the report using the MET/TRACK "Run Any Report" from the Menu Bar.

All Reports... (34)

Report Name	Size	Date	Time
basic_inventory.rpt	9,728	28 Mar 2005	17:25:18
basic_report_template.rpt	17,920	28 Mar 2005	17:27:06
cal_due_by_asset_for_xxx_days.rpt	12,800	28 Mar 2005	17:59:54
cal_due_by_asset_through_date.rpt	13,824	28 Oct 2004	18:26:18
cal_due_by_dept_by_status_for_xxx...	16,384	7 Oct 2004	16:29:18
cal_due_by_location_by_status_thru...	16,384	7 Oct 2004	16:29:20
cal_due_by_tech_by_status_for_xxx...	14,336	28 Oct 2004	18:26:22
cal_due_by_tech_by_status_thru_dat...	16,384	7 Oct 2004	16:29:26
CAL_LABEL_12x26.rpt	17,408	26 Mar 2009	13:14:30
CAL_LABEL_18x30.rpt	51,712	20 Nov 2008	20:51:22
CAL_LABEL_24x38.rpt	51,712	20 Nov 2008	20:51:15
cal_procedures_and_revs_for_eqpt.rpt	15,360	28 Mar 2005	16:13:40
cal_summary_for_asset_number.rpt	17,408	7 Oct 2004	16:29:28
cal_summary_for_work_order.rpt	17,408	7 Oct 2004	16:29:30
cal-results-w-uncert.rpt	520,192	21 Apr 2009	21:10:41
ctagrslt.rpt	41,317	4 Oct 2002	11:20:52
field_customization.rpt	57,856	7 Oct 2004	16:29:32
field_properties.rpt	102,912	7 Oct 2004	16:29:40
license.rpt	11,776	30 Mar 2005	14:06:10
master_inventory_for_asset_number.rpt	14,336	7 Oct 2004	16:29:42
METEX_Givarfaktor_1ln.rpt	16,896	9 Apr 2009	06:56:13
OTS_Licenses_Crys_10.rpt	10,752	7 Jun 2009	15:23:21
rt_certificate_of_cal_or_failed_ca...	18,432	7 Oct 2004	16:29:44
rt_report_of_cal_ver_7.rpt	75,264	28 Mar 2005	12:37:26
rt_report_of_cal_ver_7_color_coded...	93,696	28 Mar 2005	12:34:22
rt_report_of_cal_ver_7_color_coded...	88,064	28 Mar 2005	12:47:36
rt_report_of_cal_ver_7_failures.rpt	74,752	28 Mar 2005	12:31:26
rt_report_of_cal_ver_7_failures.J.rpt	79,872	28 Mar 2005	12:50:22
rt_report_of_cal_ver_7.J.rpt	87,040	28 Mar 2005	12:45:12
rt_report_of_cal_with_exp_uncert.rpt	75,776	28 Mar 2005	12:27:02
rtstlt03.rpt	520,192	7 Apr 2009	07:19:48

When you run the report, you will see a list of OTS license codes. The license code for METEX1 is code 011. You can copy the code from the report or write it down.

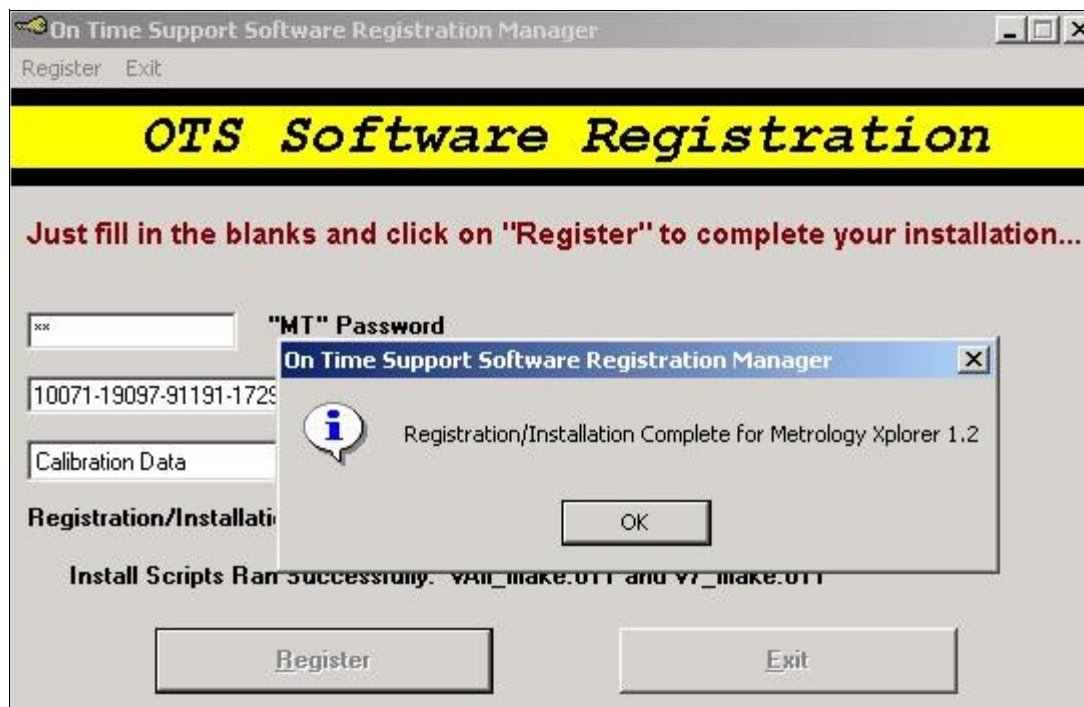
06/07/2009		<b>On Time Support Licenses Codes</b>	
<u>PRODUCTCODE</u>	<u>SERIALNUMBER</u>	<u>REG CODE</u>	
011 - Metrology Xplorer 1.2			
011	02212	10071-19097-91191-17296-19399	

Now, that you have the license code, you can register METEX1. Using Windows Explorer, select the directory  where you copied the admin program files for METEX1. Double click on the  registration icon.

Now you can register METEX1 with your existing license. Enter your "mt" password and enter the license code. Make sure you select the correct ODBC source. In our example it is "Calibration Data".

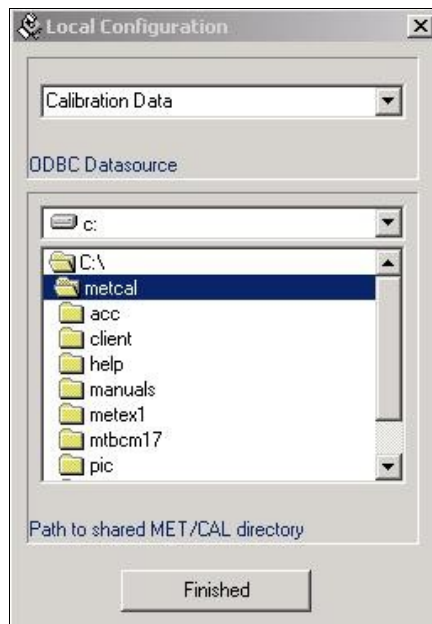


After you successfully register your license, you should see the following screen.



You can now use Metrology Xplorer 1.

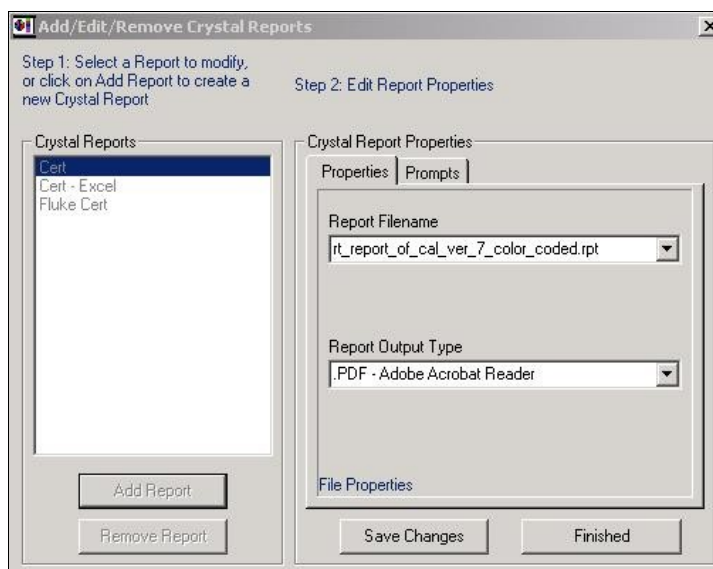
## Using the New Crystal Report Feature in METEX1



If you try to run an existing report, the report format will default to a PDF output. If you are satisfied with this format, you do not have to modify the reports. However, we have provided a brief step by step procedure for adding a Crystal Report to METEX1.

Start the web admin program and login with the MT password. The first step is to let admin program know where the reports are located, so they can be configured. On the menu bar click Configuration | Local Configuration. Select the directory where the reports are located. Our example shows the reports to be located in c:\METCAL. Click **Finished**.

Next we add the report. Our example adds one for the Fluke Certificate report which uses a stored procedure. This is a very quick example. Complex reports with several prompts will use formulas to pass the prompt information. METEX1 does not use the parameter function in Crystal Reports. The main METEX1 manual covers this information in more detail.

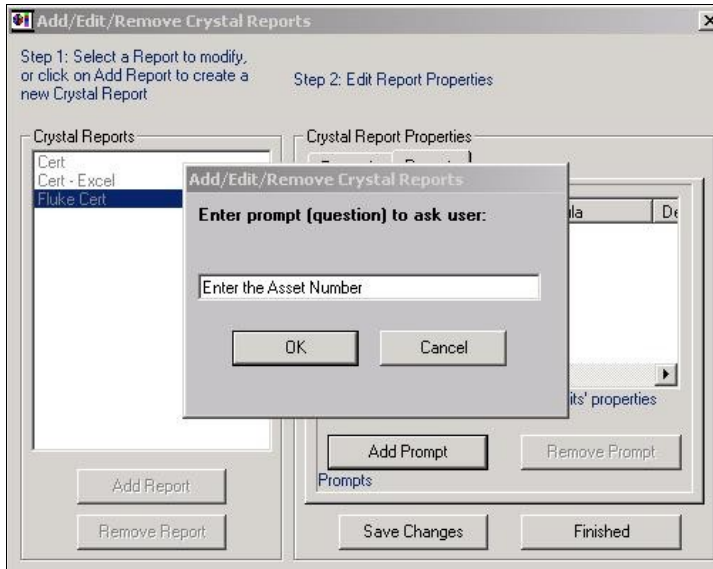


On the Menu bar click on Report | Crystal Reports. In our example, we clicked **Add Report** and selected rt\_report\_of\_cal\_ver\_7\_color\_coded.rpt.

If you do not select a report the format will be a PDF. We have selected a PDF output in our example.

We need to add a prompt to ask for the asset number.

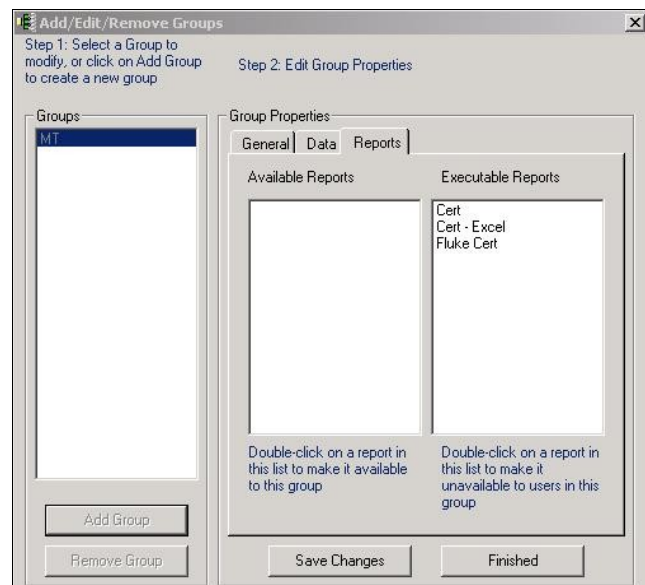
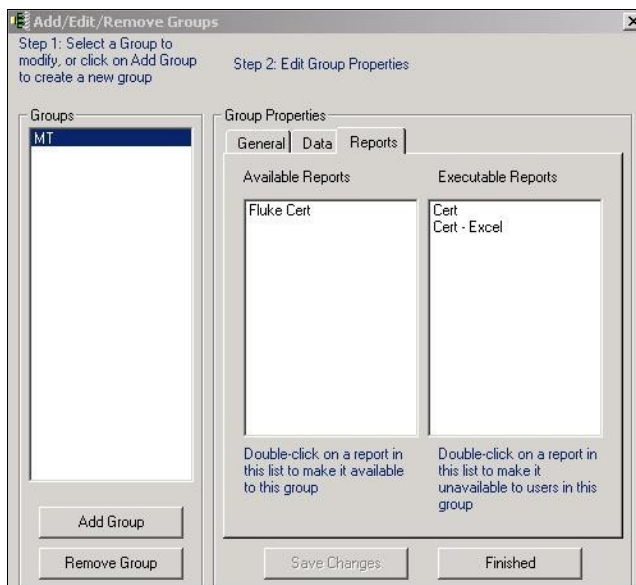




Click the **Add Prompt** button and add the prompt, "Enter the Asset Number". Click **OK** and you will be prompted for a default value. Leave this blank and click **OK**. You will be asked for a prompt type. The value should be "String". Click **OK**. You be asked for a default value. Leave this blank. You now have a report with a prompt.

Be sure to click **Save Changes** and then click **Finished**.

The next step is to make the report available to the users. At this point the report is configured, but we have to turn it on.



From the menu bar select Users/Groups | Add/Edit/Remove Groups. Click on the Report Tab.

As you can see looking at the picture at left, the Fluke Cert Reports is Available, but not executable. Double click on the report you just created and it will move to the Executable Reports side of the screen. Click **Save Changes** and then click **Finished**.

## **Running a Report in Metrology Xplorer 1**

Running a report will be just like it was in the original version of METEX1. If you want reports with different output types, like excel sheets, you will have to create a report with that output type.

If there are any problems with configuring this program. Please contact On Time Support.