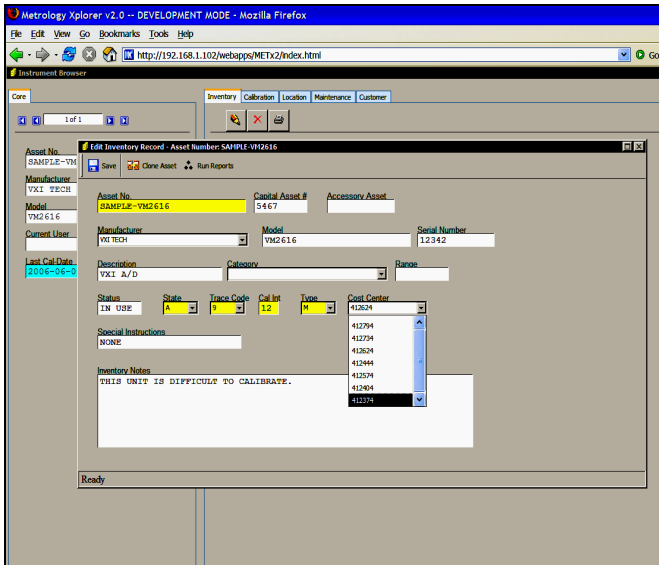


# Metrology Xplorer Series



**Metrology Xplorer 2 Data Entry Screen**

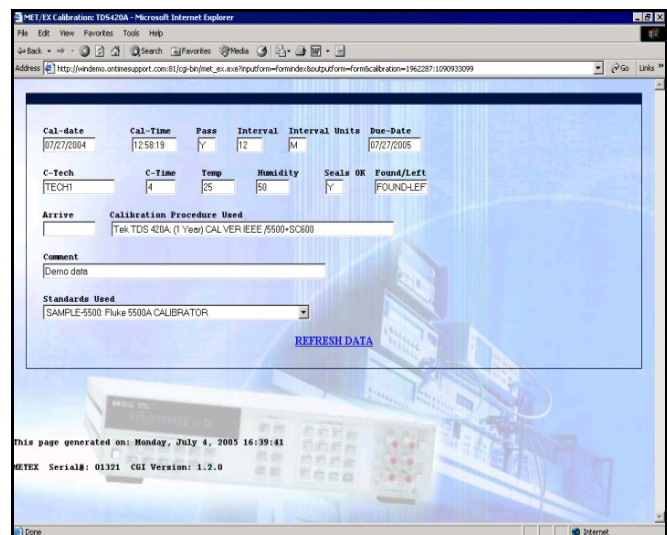
In 1999, On Time Support released Metrology Xplorer® 1.0 for Fluke's MET/CAL® and MET/TRACK®. During that time, web based applications were seen as a new technology for the calibration laboratory to use, even though browser standards were still being developed. Metrology Xplorer gained a reputation as a "reliable, high speed" data access tool for end users and customers. There is a much higher demand for web browser applications because there are less requirements from the IT department for support. There are also other practical reasons like the ability to provide support for different OS platforms for the client computer. For example, one user could use Metrology Xplorer on a Mac Workstation while another user could use the same application on a Windows or Linux machine, all on the same system. There are no programs to install since browsers are generally already installed on the client computers.

Since the release of the original Metrology Xplorer, On Time Support has created two different versions to provide the customer with more choices for accessing instrument data via a web browser. The Metrology Xplorer 1.x series (METEX1) allows for the customer to view data and run reports. METEX1 also provides a site license thereby allowing an unlimited number of users to access their data.

The Metrology Xplorer 2.x series (METEX2) operates in a similar manner to the Fluke MET/TRACK 7.x application. The user is able to Add/Edit/Delete instruments and run reports. This is dependent on the user level security settings.

There are several immediate benefits to using Metrology Xplorer on your company's network:

- Almost all computers have a web browser pre-installed; you do not need to install anything on your customer's computer to allow access to MET/TRACK.
- Most people are already familiar with browser usage, so there is no need for extensive training on MET/TRACK operation. The screens are simple, intuitive, and require very little, if any training to use.
- Internal and external customers may view instrument data and run reports at their convenience, instead of having to disrupt your work flow to provide them with this information.
- Since many operating systems (such as Linux®) have web browsers available for them, you can provide access to your metrology data to customers that normally would not be able to access your MET/TRACK data due to OS incompatibility.
- A reduction in phone calls to the lab requesting status information on test instrumentation. This provides a 24 hour attendant for the users. Many customers comment how much time Metrology Xplorer has saved them.
- Metrology Xplorer 1.x has a well known reputation for providing access to data at very high speed even with congested networks. Metrology Xplorer 1.x requires very little bandwidth to operate.



**Metrology Xplorer 1 Viewing Data Screen**

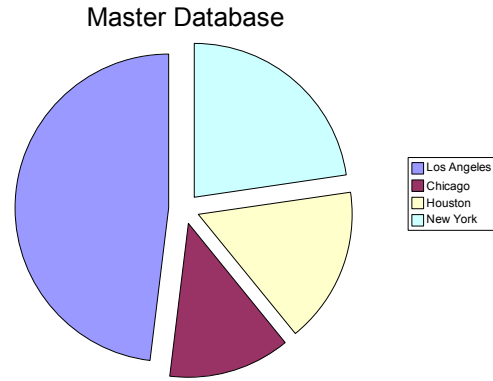
You can select one version of Metrology Xplorer or you can use them both since each one offers your company additional benefits. Both versions are compatible with MET/TRACK 7.x and easily compliment each other.

## Which Version to Choose

Below is a compatibility chart to help you decide. Do you need version 1, Version 2, or both?

Feature Description	METEX 1	METEX 2
Site License to view data and run SQL and Crystal Reports.	x	
Single floating license to Add/Edit/Delete Data. Customer must specify the number of licenses required.		x
Dynamic Web Page Creation	x	x
MET/TRACK 7.x Desktop Support		x
MET/TRACK 7.x Emulation.		x
Merge Table Editing		x
Support for SQL Reports.	x	x
Support for Crystal Reports.	x	
Utilizes the OTS METDaemon.		x
Ease of Installation.	x	x
Low Training Time	x	x
Simple IT Support	x	x

As many of you know, the Fluke MET/TRACK system allows the database to be formatted into database subsets or segregates. These subsets can represent a part of the database for a site. Each site is linked to the database via a WAN. METEX1 really works well in this type of environment because a Wide Area Network can operate considerably slower than a Local Area Network and METEX1 requires very little bandwidth.



In this example, we configured the MET/TRACK database into 4 regions each connected via the customer's WAN. The users can use MET/TRACK 7 or METEX2 to change and edit data, and then use METEX1 for users that want to view data and reports.

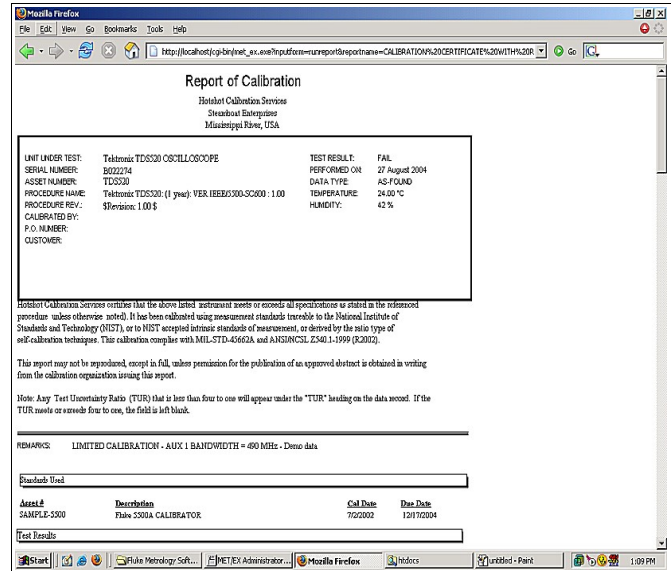
## Metrology Xplorer 1

If you have a need to allow your internal and/or external customers access to your data for viewing and running reports, then METEX1 is a great choice. You can set up the system to allow anyone on your network to view the data, or you require a user ID and password to log in.

### For Larger Systems

On Time Support has a lot of experience when it comes to installing systems with multiple sites operating over a Wide Area Network (WAN). METEX1 works well in these installations by taking the load from the system for the reporting and viewing. Running reports can slow a system down, but METEX1 can provide both SQL and Crystal Reports to the users as well as displaying the different MET/TRACK screens very quickly.

The screens are dynamically created from the MET/TRACK default desktop. The administration program allows the system administrator to turn off any other fields that are not appropriate to display. Data is always displayed instantly because METEX1 does not require an update from a master database to a web database. METEX1 only works from the MET/TRACK database.

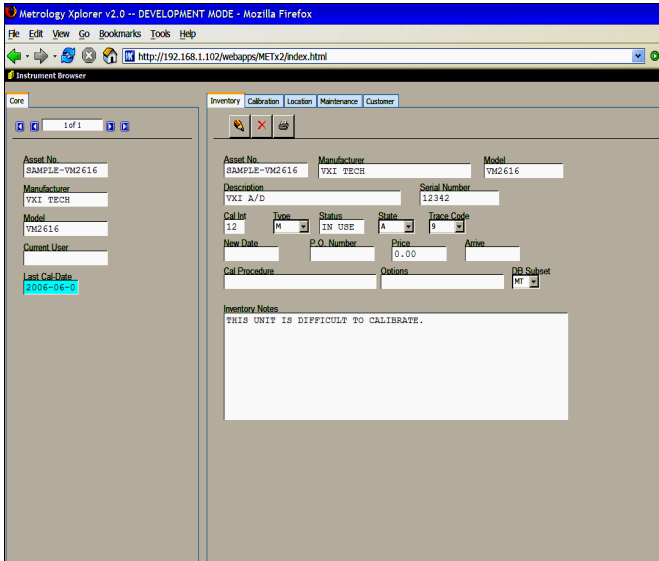


Metrology Xplorer 1 Viewing Crystal Report

The SQL Quick reports is considered one of the most popular features of METEX1. However, METEX1 will also run Crystal Reports. The picture shown above is the Fluke "Report of Calibration" certificate which was run with Metrology Xplorer, "right of the box" with no modifications. If you need to create simple report lists, use the SQL reports. If you want to group data sets, then use the Crystal Reports feature.

## Metrology Xplorer 2

Metrology Xplorer 2 utilizes current industry standards for web applications and has the ability to support multiple server operating systems.



Metrology Xplorer 2 Browse Data Screen

METEX2 utilizes the Fluke MET/TRACK 7 look and feel that MET/TRACK users are already familiar with. METEX2 is easy to navigate and appears like a typical dedicated client installation instead of a web browser application. In fact, some users have commented that they forgot they were using a browser.

The On Time Support METDaemon Application Server is used to deliver the METEX2 application to the client. The METDaemon is also used for the E-Mail notification program and has a track record for reliability and performance. The METDaemon is very easy to install and maintain with product updates that are easy to implement on the server. There are no web servers to install for METEX2 and no ODBC settings to configure.

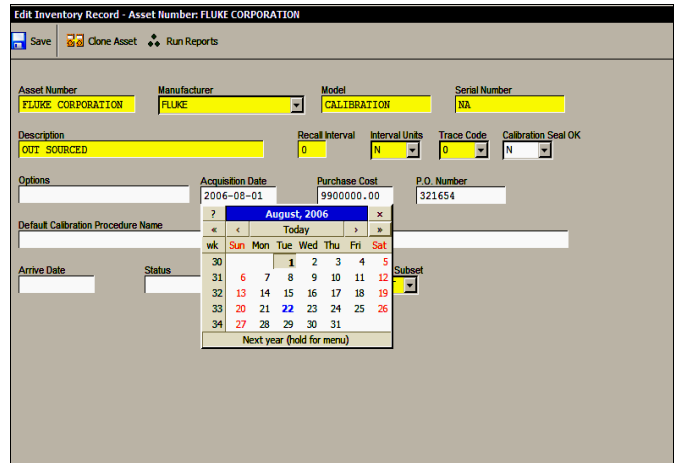
While Metrology Xplorer 2 does not replace the existing Metrology Xplorer 1, the new version allows adding, editing, and deleting records in the Fluke MET/TRACK database via a web browser much like the MET/TRACK product. Both products compliment each other very well.

METEX2 requires a floating license much like MET/TRACK 7. For example, if you have 4 licenses and 8 users, only 4 users will be able to access the database. METEX2 does not utilize Active-X controls and has the ability to operate on Non-Windows systems.

## MET/TRACK Desktop Support

A popular feature of MET/TRACK 7 is the desktop feature. Desktops really add to the flexibility of the system by allowing different screen layouts and colors. This can be especially important for users where some colors might be difficult to see. METEX2 supports the MET/TRACK 7 desktop feature and makes it easy to switch between desktops.

METEX2 supports validation, pick-lists, merge tables, and easy data entry. For example, need to enter a date? Just click on a date field and the calendar pops up.



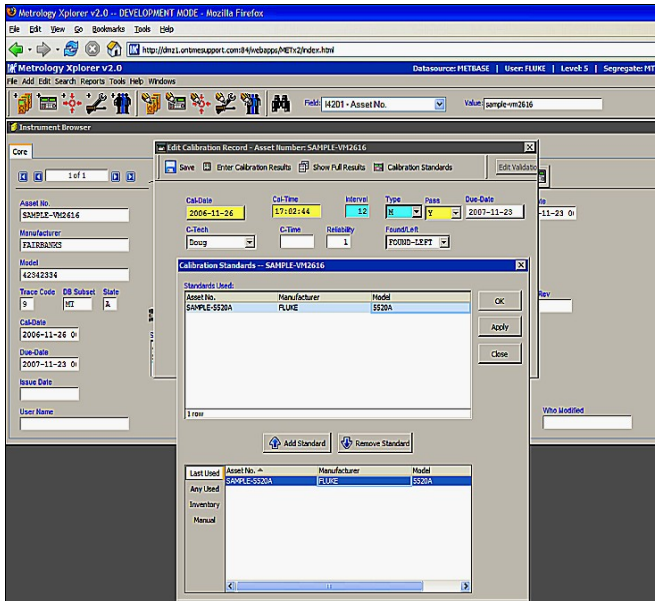
Metrology Xplorer 2 Entering a Date

METEX2 makes running reports very easy because it utilizes the SQL reports stored in the METDaemon. You can even use some of the same reports that the E-Mail Notification application uses.

Asset	Mfg	Model	Description	Serial #	Due Date
T0169	VAISALA	HM34F	TEMP & HUMIDITY	P3320006	09/02/2006
VM0258	FLUKE	175	MULTIMETER	89320012	09/02/2006
CE0036	ASHCROFT	1305D-50(BA-350	PORTABLE GAUGE TESTER	2KH-04372	08/31/2006
P 0865	SENSOTEC	GS-1	S.G. TRANSDUCER	1072556	08/26/2006
P 0864	SENSOTEC	GS-1	S.G. TRANSDUCER	1072546	08/26/2006
P 0863	SENSOTEC	GS-1	S.G. TRANSDUCER	1070271	08/26/2006
P 0862	SENSOTEC	GS-1	S.G. TRANSDUCER	1066104	08/26/2006
FA0034	AIRFLOW INSTRUMENTATION	DVA30VT	ANEMOMETER	055479	08/26/2006
DA0201	SOMAT	EDAQLITE		0202	08/25/2006
TW0002	STANLEY PROTO TOOLS	J6125F	DIAL TORQUE WRENCH	406078	08/24/2006
AL0433	DAVIS	TURBO METER 0271	WIND SPEED INDICATOR	N91597	08/23/2006
TW0001	STANLEY PROTO TOOLS	J6177F	DIAL TORQUE WRENCH	405924	08/22/2006
T00169	OMEGA	HR21	PORTABLE READOUT	T-257149	08/16/2006
CE0035	ALTEK	40A	FREQUENCY SOURCE	8946001	08/16/2006
VM0257	FLUKE	73 III	MULTIMETER	88780046	08/04/2006
CE0034	ASHCROFT	1305D-50	PORTABLE GAUGE TESTER	11329	08/03/2006
AL0442	BRUEL & KJAER	2238	SOUND LEVEL METER	2231488	08/01/2006
AL0441	BRUEL & KJAER	4188	MICROPHONE	2230908	07/27/2006

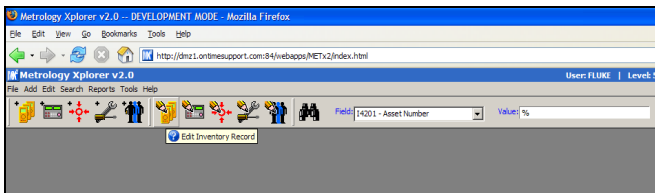
Metrology Xplorer 2 Report Screen

The picture shown above is an example of an SQL report executed in METEX2. These reports are very flexible and fast.



**Metrology Xplorer 2 Entering a Calibration Record**

The picture above shows entering calibration data. Standards are entered via a pop-up screen. Full results can also be edited. The data entry screen seems to float on top of the browser screen using only one instance of the browser.



**Metrology Xplorer 2 - Icons and Tool Tips**

Customers that have used MET/TRACK 7 will already be familiar with the program's icons. METEX2 also uses the same icons and search bar.

### Ordering Information

- 5022** – Metrology Xplorer 1 – Site License.
- 5023** – Metrology Xplorer 1 – METEX1.x Upgrade to current version of METEX1.
- 5026** – Metrology Xplorer 2 – Client Floating License.

### System Requirements

Metrology Xplorer 1 and 2 should both be installed on the Sybase server where the MET/TRACK database is installed.

- Typical Memory Required: 1 GB or more
- Processor Speed: 1 Ghz or faster
- Data Storage: 1 GB or more
- Operating System: Windows 2000 or 2003
- METEX 1 does require a web server and supports Microsoft IIS and Apache.
- Web Clients – Internet Explorer 7+, Firefox 1.5+

## Other On Time Support Products for MET/TRACK

### Barcode Magician Reliable Data Entry

Barcode Magician (BCM) allows you to automate repetitive database entry tasks such as checking in/out equipment or changing equipment status simply and consistently for any quantity of assets using a simple barcode tool or keyboard. BCM provides a simple, easy to use interface that allows your calibration technicians and instrument custodians a way to update your Fluke MET/CAL® Plus database quickly and efficiently while at the same time drastically reducing data errors and substantially increasing productivity.

### Ordering Information

- 5032** - Barcode Magician Basic
- 5034** - Barcode Magician Plus

### Label Printers & Laser Scanners Calibration products for the lab



ON TIME SUPPORT now offers laser barcode scanners and a label printer package that will automatically print labels directly from your Fluke MET/CAL and MET/TRACK 7.x systems. Many cal lab technicians hand print calibration labels. Hand printing a small label can be tedious, time-consuming, and inaccurate. Just imagine being able to automatically print a label (that is actually legible) with the correct information such as the asset number, calibration date, calibration due date, technician ID, and maybe even an asset barcode. There would be no more discrepancies between your database and what the label says.

**For ordering information, call On Time Support**

## On Time Support, Inc.

25132 Oakhurst Drive, Ste. 185  
Spring, TX 77386  
281.296.6066  
Fax: 281.465.9478

[inquiries@ontimesupport.com](mailto:inquiries@ontimesupport.com)  
[www.ontimesupport.com](http://www.ontimesupport.com)